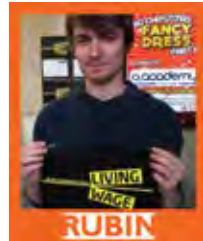
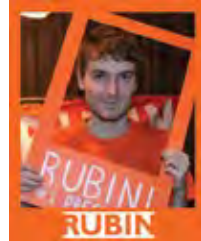


# RUBIN

## #1 BLOCK OF 15



**“Michael has achieved so much at Leicester this year, his understanding of the issues facing students today and this record on community organising means I’ll definitely be giving him my vote at National Conference.”**

**Raechel Matthey - VP Union Development**

- Education Officer Leceister Students’ Union
- Won the Living Wage at my SU for all staff with dependents
- Introduced Liberation Officers and Fair Representation
- Made the University introduce both lecture capture and exam feedback
- Organised a national ‘Working as Partners’ Conference
- Signed up Jon Ashworth MP as a Postgraduate Champion

### POSTGRAD FUNDING WINNING THE ARGUMENT

Too many students are still being priced out of postgrad study. When access to education is based on your ability to earn rather than your ability to learn, NUS needs to step up and take action.

Students should not be forced between not continuing into education and having to take out ‘professional development loans’ at crushing rates of interest which have to be repaid straight away, regardless of income. I’ve run Leicester SU’s first ever priority campaign focussed on postgraduates.

Elect me and I’ll push for NUS to relentlessly focus on the fight for a fair system of postgraduate funding. I’ll fight to see a government-backed national postgraduate funding system that allows all students to study to postgraduate level.

### WINNING FOR STUDENTS AND OUR COMMUNITIES

My first involvement in my SU was using community organising to campaign and win a living wage for SU staff with dependants.

I saw first hand the impact that community organising can have on activists and communities, it was the Living Wage campaign that got me interested in student politics. I want to use the power of community organising to help students’ unions make a difference to the lives of students and their communities.

I’ll push for community organising training for all student officers during summer training. Let’s use community organising to win the general election for students. I’ll push for an actual General Election strategy with community organising tactics at its heart.

### PUTTING PARTNERSHIP INTO PRACTICE

Partnership has the potential to radically reshape the way we think about education, but we need to move the discourse away from buzzwords. Now it’s time to move towards practical steps every union can take to put partnership into practice at their institutions.

Along with a research group of students and staff, I organised the first national conference on partnership at my SU. Bringing together over 150 delegates to discuss how they can embed partnership into their unions and institutions.

As a member of the Block of 15, I’ll work with the HE campaign to create a set of practical tools for unions to use to put partnership into practice.

 Labour Students

I’m standing as a Labour Students candidate. I joined the Labour party because of my beliefs in social justice and collectivism but I will never put party politics above students.

If you require this manifesto in an alternative format or have any questions please don’t hesitate to get in touch.

@MichaelRubin92  
Rubin4block@gmail.com  
07944 473834